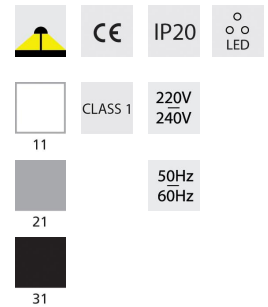


## ARIA SMART



OC ECG DALI **	Lamp	Socket	A/A1/B/B1/H/H1	a/a1/b/b1/h/h1[mm]	Weight [kg]	Flux [lm]*	∠	Total power [W]
5132115XY	4 x LLS /840	LED	615/500/325/335/ 44/1950	-	16	13200	-	95

XY: 11, 21, 31

CCT [K]	4000 K
CRI	>80
LED Service life	50000h L70B10 /SDCM 3

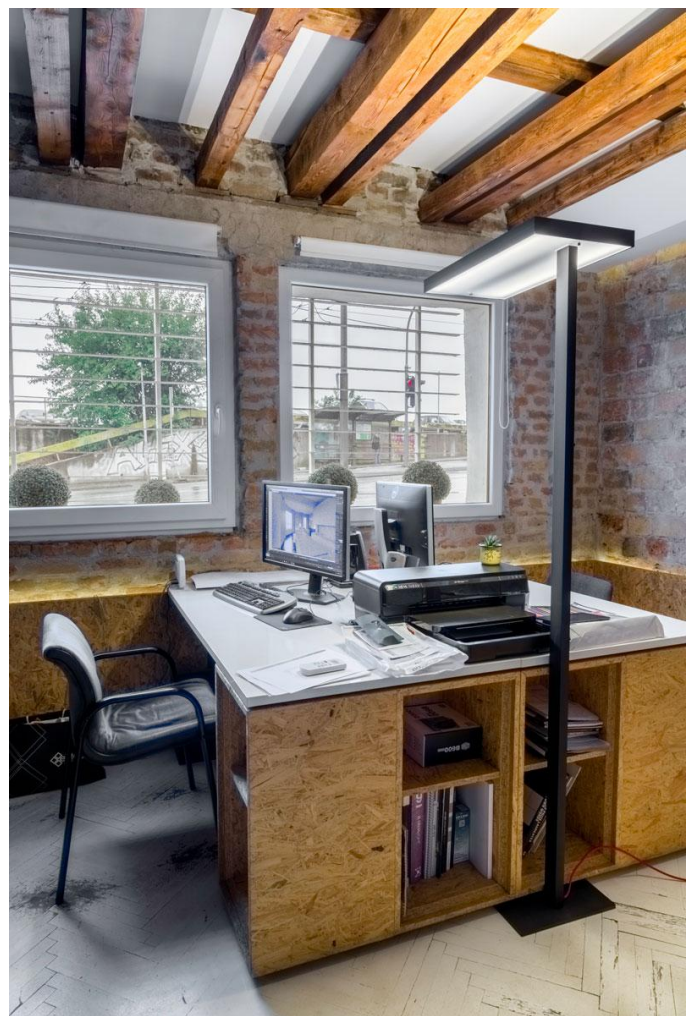
**GENERAL** Free standing luminaire for direct and indirect illumination of work spaces. The dominant indirect component provides general illumination, while the direct one provides local illumination in the working zone. Visual comfort ensured with the latest optical and electrical components.

**OPTICS** For the direct light component: highly transparent microprismatic diffuser with opal foil enabling glare limitation and a uniform diffusing light, according to EN 12464, UGR19. Optics for indirect light component: transparent diffuser.

**HOUSING** Luminaire of extruded aluminium. Finish: epoxy polyester powder coating. Fine structured texture.

**EQUIPMENT** Equipped with multisensor: presence and daylight detection sensor and Touch Dim/DALI gear. Supplied with the non standard, 6 m long cable with plug.

**ADDITIONAL** Other light colour temperatures available upon request.



\*\* Add '-5' on ordering code for DALI control gear or

\*\* Add '-4' on ordering code for 1-10V control gear

\* Luminaire luminous flux and connected electrical load - initial tolerance of  $\pm 10$  % (at ambient temperature of 25°C)